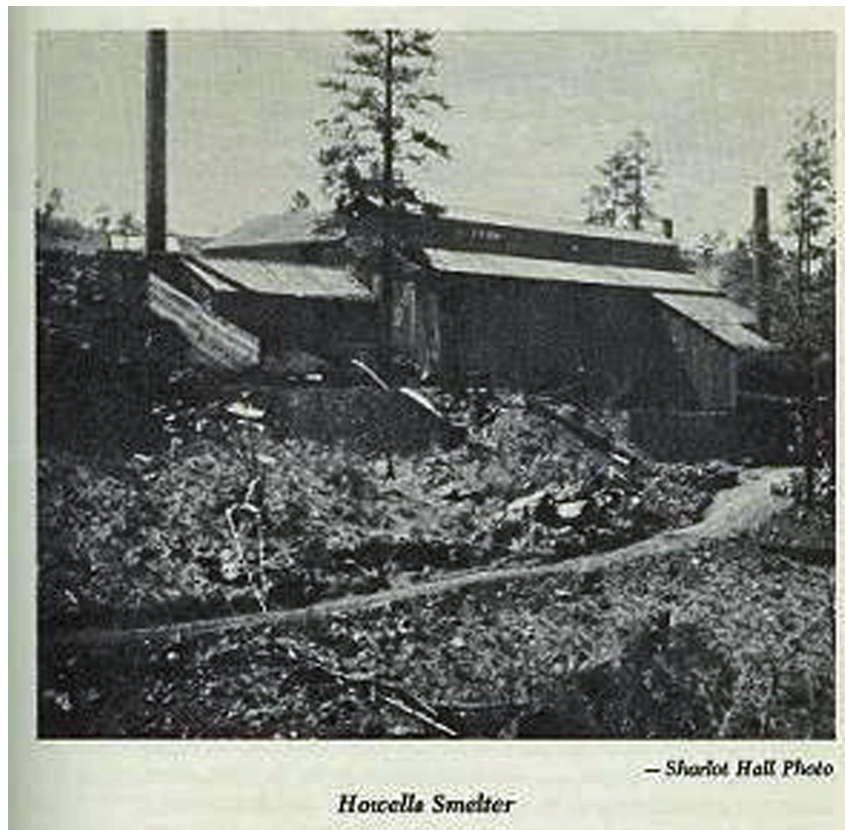


HOWELLS

6 ½ miles south of SR 69 at a point 4 miles east of Prescott. (Less than a mile down Lynx Creek from Walker.)

The discovery of silver-lead mines south of Prescott in the 1870's convinced metallurgist John Howell that he should build a large, centrally located smelting works. A veteran of Austin and Candelaria, Nevada, Howell had invented various improvements to milling machinery. In 1882, he selected a site along Lynx Creek and with Chicago backing build a two-stack, quartz mill, and sawmill. Near the plant, a town of 200 supported an assay office, blacksmith, boarding house, stage station, saloons, and company store. Henry Goldwater, Senator Barr Goldwater's uncle, ran a rival store. The smelter company bought the nearby Belle mine and purchased ores from surrounding mines, especially the Dosoris at Cox (9 miles by rough jeep trail south of Top of Pines on US 89 at a point 6 miles south of Prescott.) but the high cost of hauling coke sixty miles from the railroad made the venture unprofitable. In less than a year of operations, John Howell produced \$173,825 worth of silver-lead and shut down. Foundations mark the site.

Credit – Central Arizona Ghost Towns by Robert L. Spude and Stanley W. Paher



Howells Smelter

— Sharlot Hall Photo